



MacBook Unibody Model A1342 Optical Drive Replacement

Written By: Walter Galan



INTRODUCTION

This guide is an internal prerequisite.



TOOLS:

- [Phillips #00 Screwdriver](#) (1)
 - [Spudger](#) (1)
-

Step 1 — Optical Drive



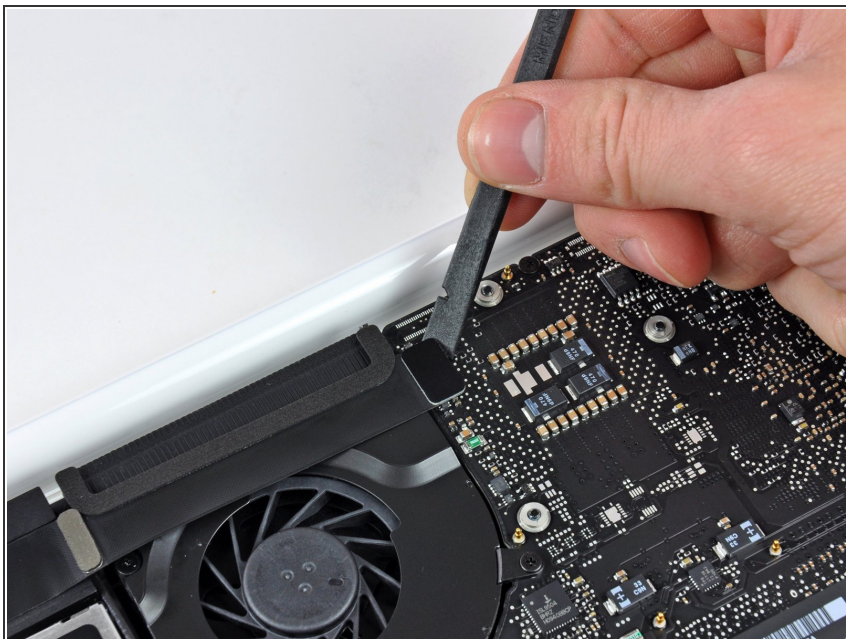
- Remove the single 12 mm Phillips screw securing the top of the rear speaker housing to the upper case.

Step 2



- Remove the single 2.2 mm Phillips screw inserted horizontally into the side of the optical drive.
- ⓘ This screw is located in a gap within the right speaker assembly, and is visible only from the hinge edge.

Step 3



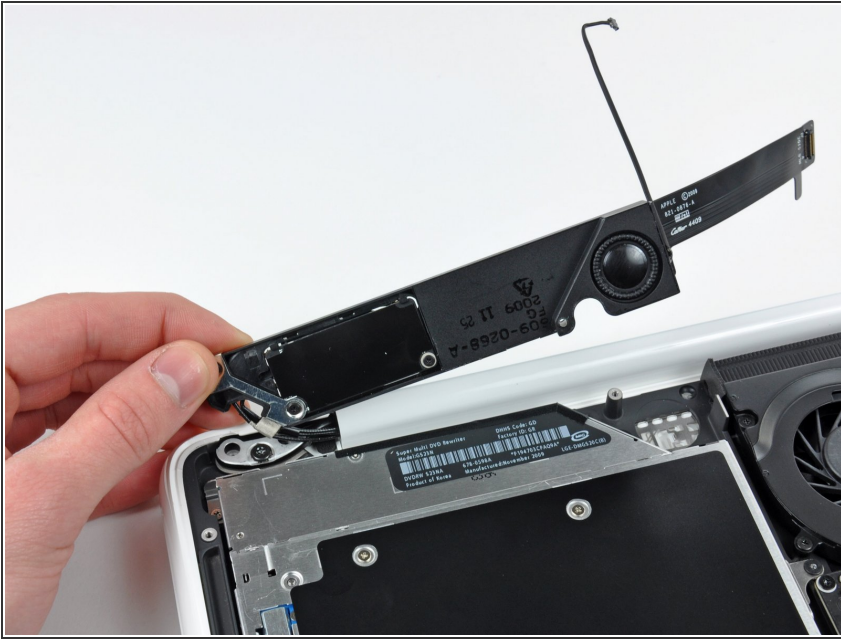
- Use the flat end of a spudger to pry the AirPort/Bluetooth ribbon cable connector up off the logic board.

Step 4



- Use the flat end of a spudger to pry the rear speaker connector up off the logic board.
- ⓘ Pry up underneath the wires.
- ⚠ This connector is very delicate and easily broken.

Step 5



- Carefully rotate the rear speaker assembly (with AirPort/Antenna cables still attached) out of the lower case.

Step 6



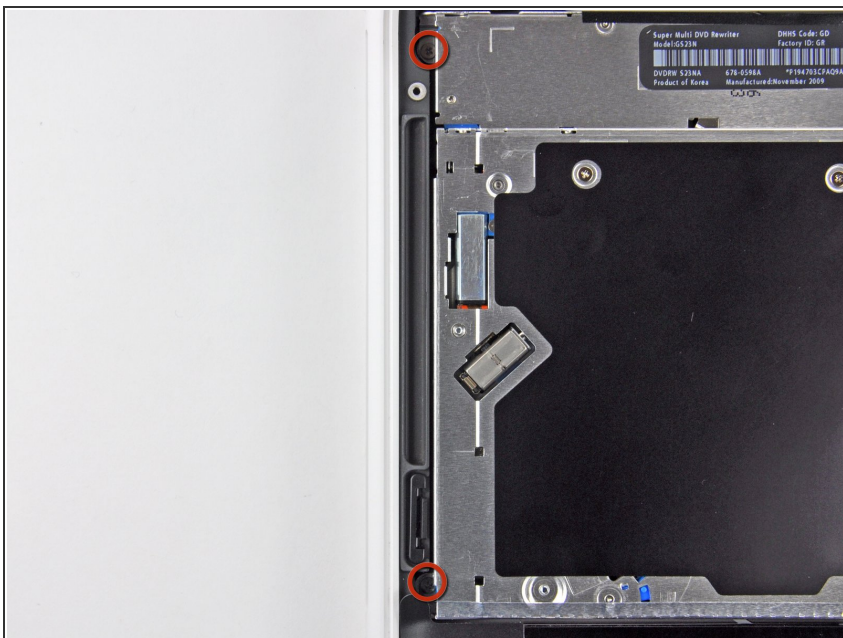
- Use the flat end of a spudger to pry the optical drive connector up off the logic board.

Step 7



- Remove the single 4.5 mm Phillips screw securing the optical drive bracket to the upper case near the fan.

Step 8



- Remove the two 2.5 mm Phillips screws securing the optical drive to the upper case near the optical drive opening.

Step 9



- Lift the optical drive near its connector and pull it away from the upper case to remove it from the computer.

To reassemble your device, follow these instructions in reverse order.